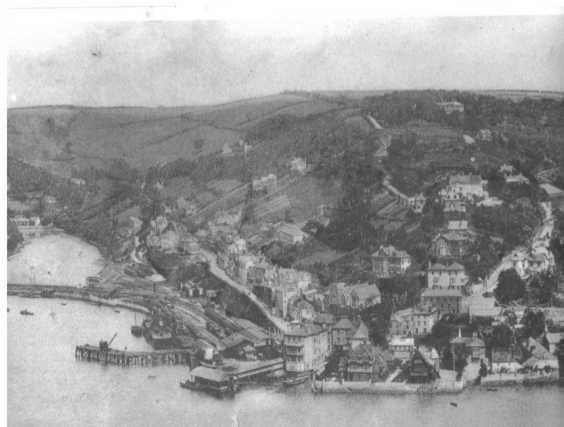


Kingswear Hall – 100 Years

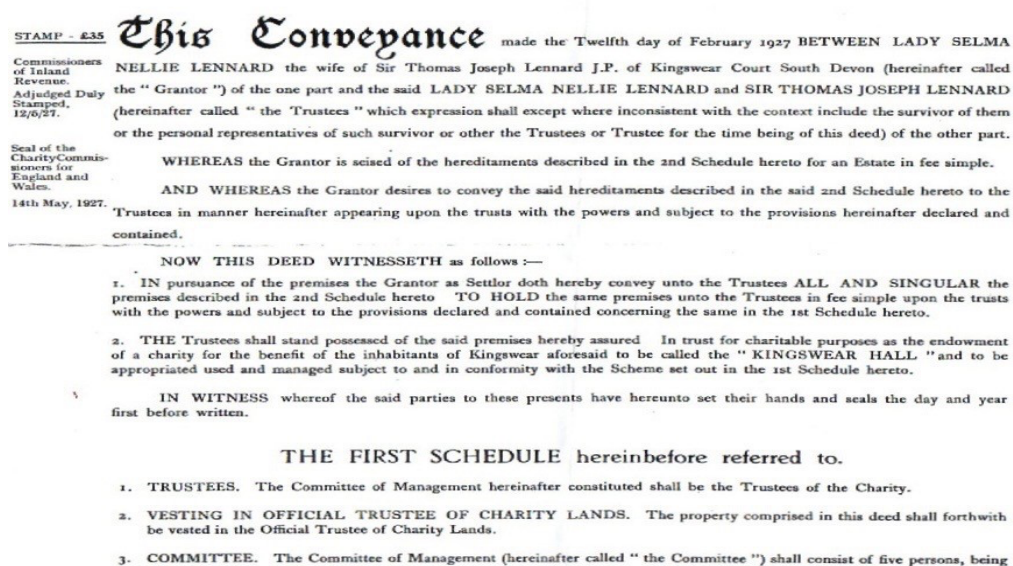
A century at the heart of our village (1925–2025)

Lady Selma Lennard played a pivotal role in the birth of Kingswear Hall. While Sir Thomas Lennard provided the means and vision, it was Lady Lennard's energy, leadership, and deep involvement with the Girl Guides that shaped the Hall's purpose and early identity.



Left: Kingswear before the Hall • Right: Kingswear with the Hall established

The 1927 Conveyance



The legal deed establishing Kingswear Hall for charitable community use.

Lady Lennard and the Birth of Kingswear Hall

Lady Selma Lennard was far more than a ceremonial figure. As Captain of the 1st Kingswear Girl Guides, she championed the idea of a dedicated space for young people and the wider community. Her belief in service, education, and opportunity formed the philosophical foundation of Kingswear Hall.

When Sir Thomas Lennard purchased and cleared the village properties in 1924, it was Lady Lennard's influence that shaped the Hall's purpose. She ensured the building served not only as a meeting place, but as a home for activity, learning, recreation, and connection.

Her involvement extended from the laying of the foundation stone on 4 July 1925 to guiding the spirit and vision behind the Hall's early years. The upper hall seated over 200 people and included a balcony intended for cinema use. Below, the Men's Club hosted full-sized billiard tables — a practical blend to ensure the Hall served all ages.

When the Hall opened on 12 December 1925, Lady Clinton publicly praised both Sir Thomas and Lady Lennard for their dedication to the rising generation. Under their guidance, the Hall quickly became the beating heart of Kingswear, hosting dances, concerts, Guides meetings, social clubs, and Red Cross first-aid classes.

During the decades that followed, the Hall adapted to the community's needs. It became a wartime ARP first-aid post, a village library, a youth hub, a concert venue, and a centre for countless clubs and societies.

Kingswear Hall in Modern Times

Today, Kingswear Hall remains as vital to village life as ever. It hosts community meetings, celebrations, children's events, charity fundraisers, fitness and wellbeing groups, art sessions, educational workshops, and performances. It is a warm, flexible, welcoming space — used by residents of all ages. Many villagers fondly remember learning first aid in the Hall, attending dances or film nights, taking part in plays, or simply gathering together for village occasions. New generations continue to enjoy the Hall as a place of friendship, creativity, and shared experience. A century after Lady Lennard helped to create it, Kingswear Hall remains a living embodiment of her values: community, service, and the belief that shared spaces make stronger villages.